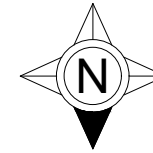

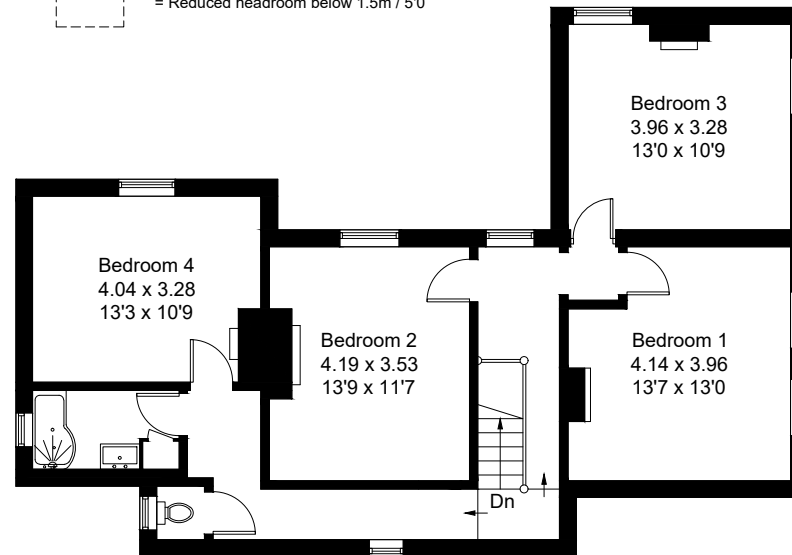


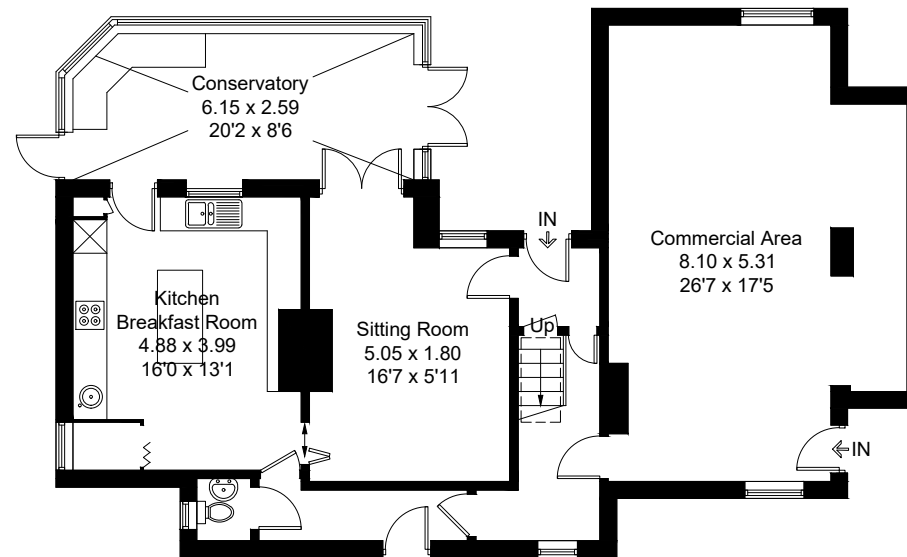
Approximate Gross Internal Area = 190.9 sq m / 2055 sq ft



 = Reduced headroom below 1.5m / 5'0



First Floor



Ground Floor

Created by **BAY TREE ESTATES - Telephone 01243 850451.**

These plans are for representation purposes only as defined by RICS - Code of Measuring Practice. Not to scale.(ID992875)