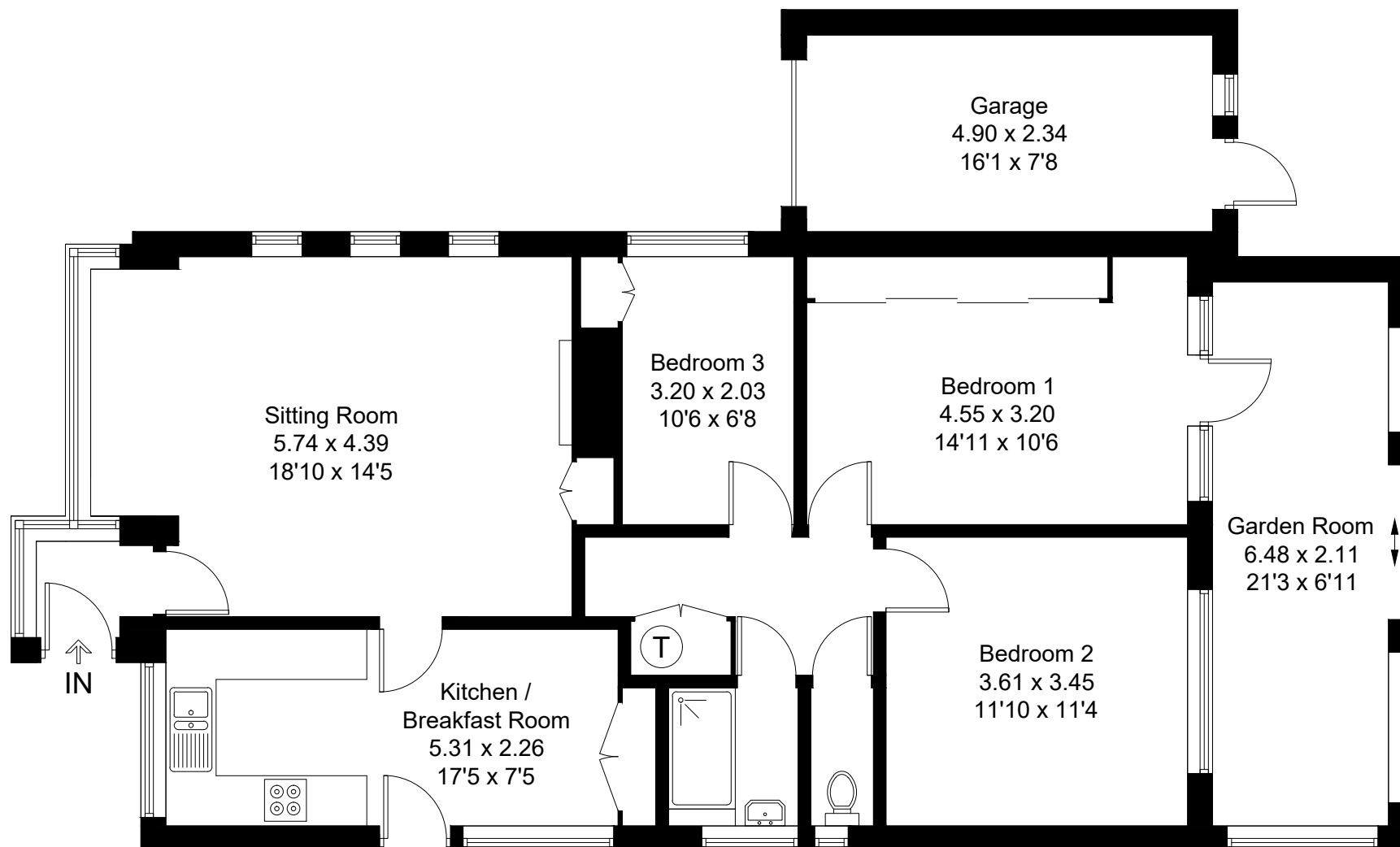
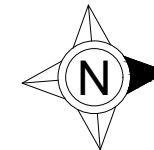


Approximate Gross Internal Area = 103.8 sq m / 1117 sq ft
Garage = 11.5 sq m / 124 sq ft
Total = 115.3 sq m / 1241 sq ft



Ground Floor

Created by **BAY TREE ESTATES - Telephone 01243 850451.**

These plans are for representation purposes only as defined by RICS - Code of Measuring Practice. Not to scale.(ID970303)