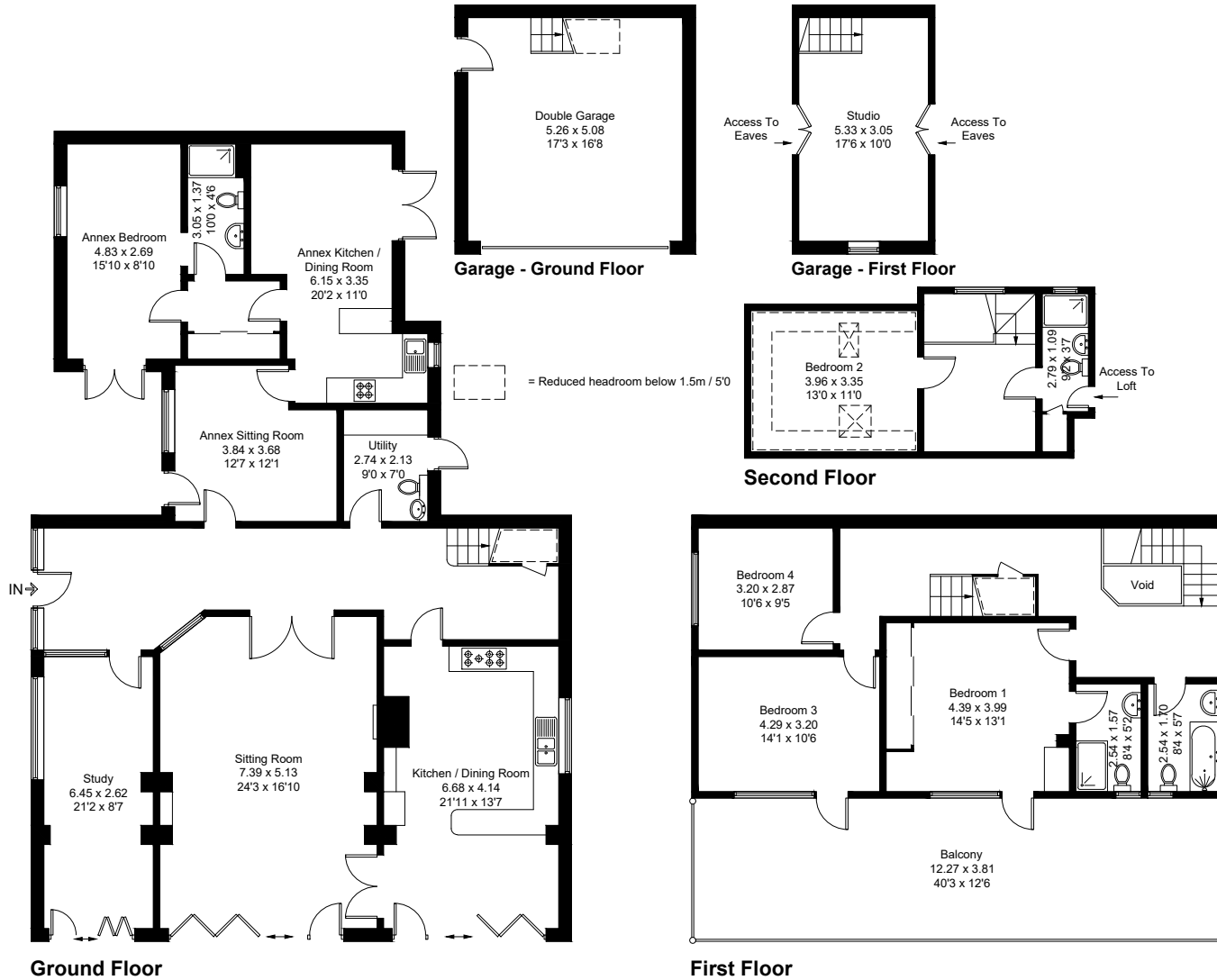


Approximate Gross Internal Area = 287.0 sq m / 3089 sq ft
 Garage = 43.4 sq m / 467 sq ft
 Total = 330.4 sq m / 3556 sq ft



Created by **BAY TREE ESTATES - Telephone 01243 850451.**

These plans are for representation purposes only as defined by RICS - Code of Measuring Practice. Not to scale.(ID893444)