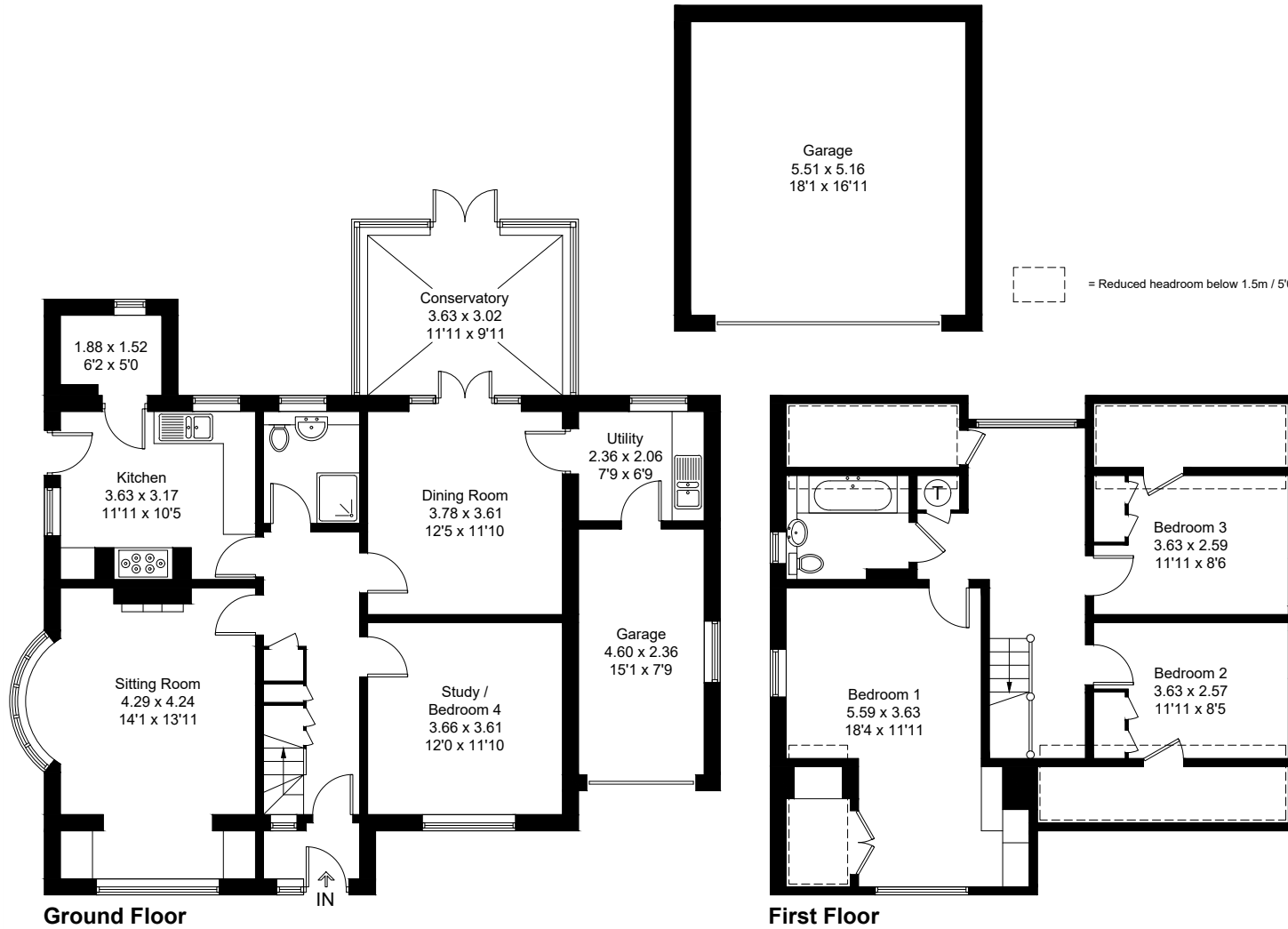


Approximate Gross Internal Area = 190.8 sq m / 2054 sq ft
(Including Attached Garage)
Detached Garage = 28.3 sq m / 305 sq ft
Total = 219.1 sq m / 2359 sq ft



Created by **BAY TREE ESTATES - Telephone 01243 850451.**

These plans are for representation purposes only as defined by RICS - Code of Measuring Practice. Not to scale.(ID801790)