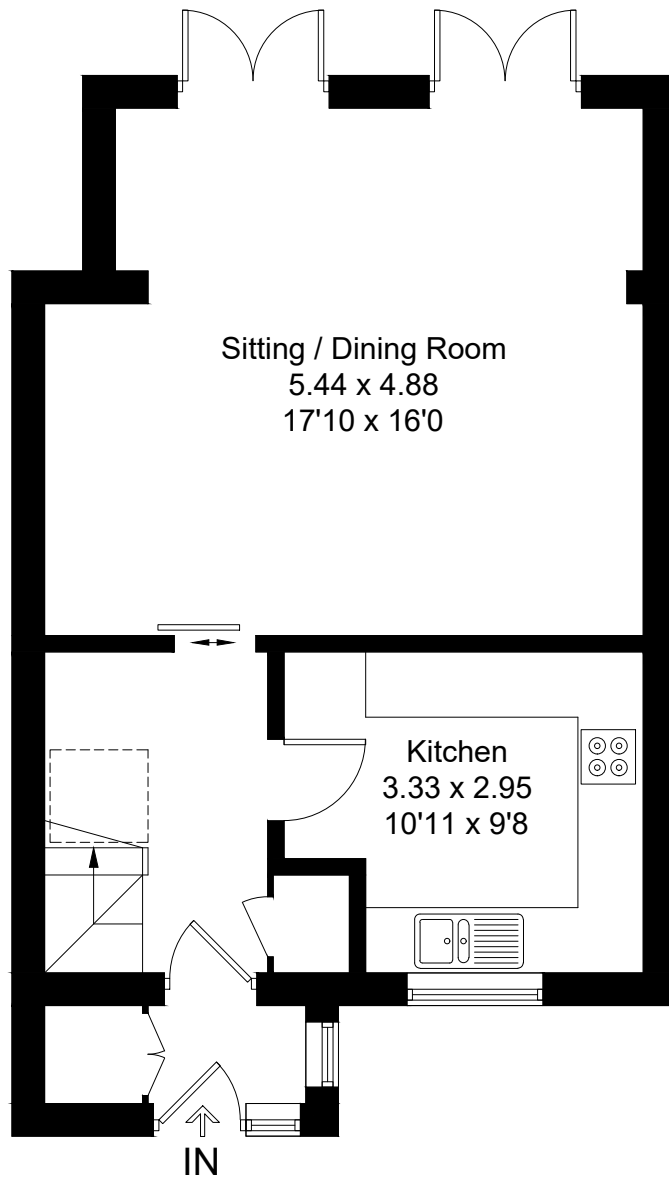
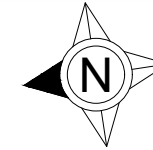


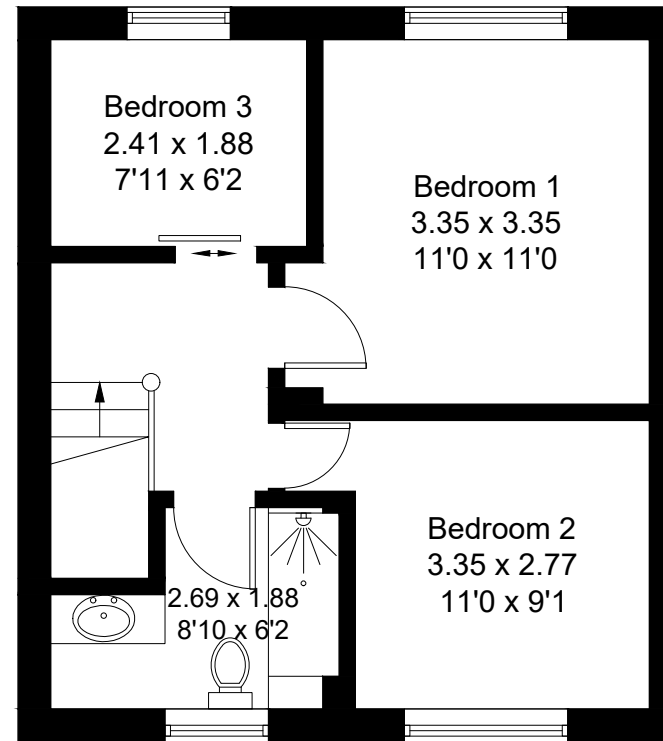
Approximate Gross Internal Area = 79.8 sq m / 859 sq ft



**Ground Floor**



= Reduced headroom below 1.5m / 5'0



**First Floor**

Created by **BAY TREE ESTATES** - Telephone 01243 850451.

These plans are for representation purposes only as defined by RICS - Code of Measuring Practice. Not to scale.(ID786530)