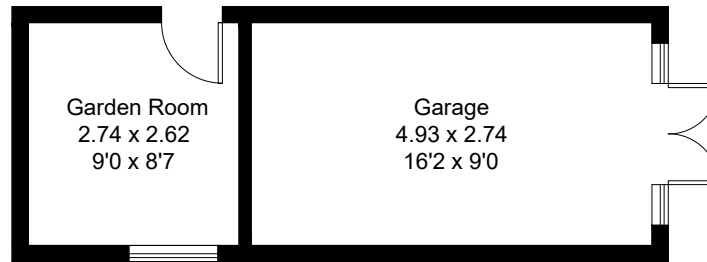
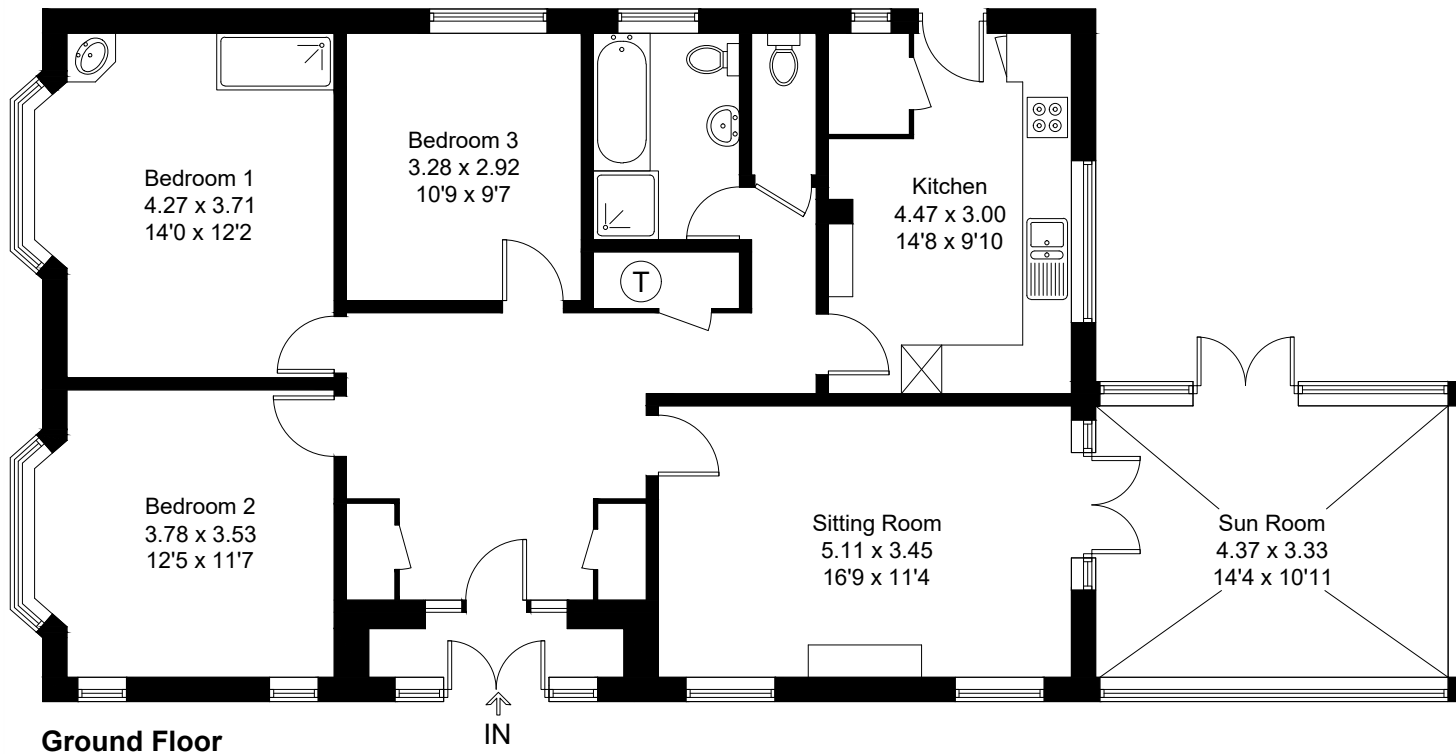


Approximate Gross Internal Area = 116.2 sq m / 1251 sq ft
Garage = 21.2 sq m / 228 sq ft
Total = 137.4 sq m / 1479 sq ft



(Not Shown In Actual Location / Orientation)



Created by **BAY TREE ESTATES - Telephone 01243 850451.**

These plans are for representation purposes only as defined by RICS - Code of Measuring Practice. Not to scale.(ID785543)