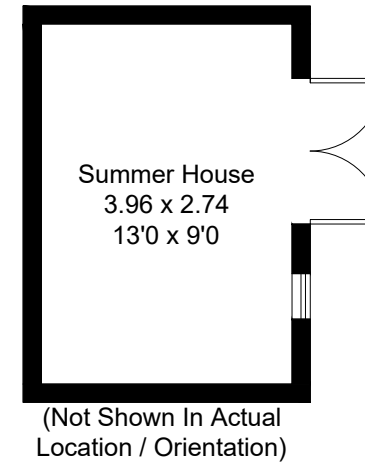
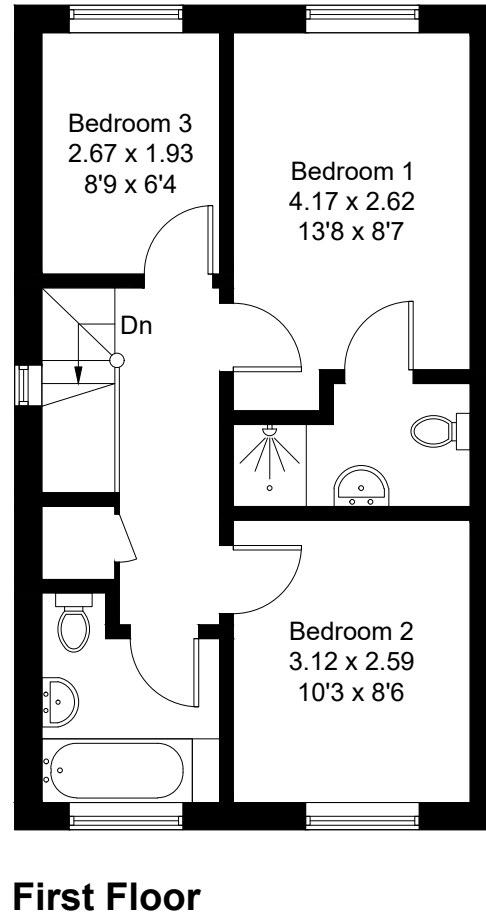
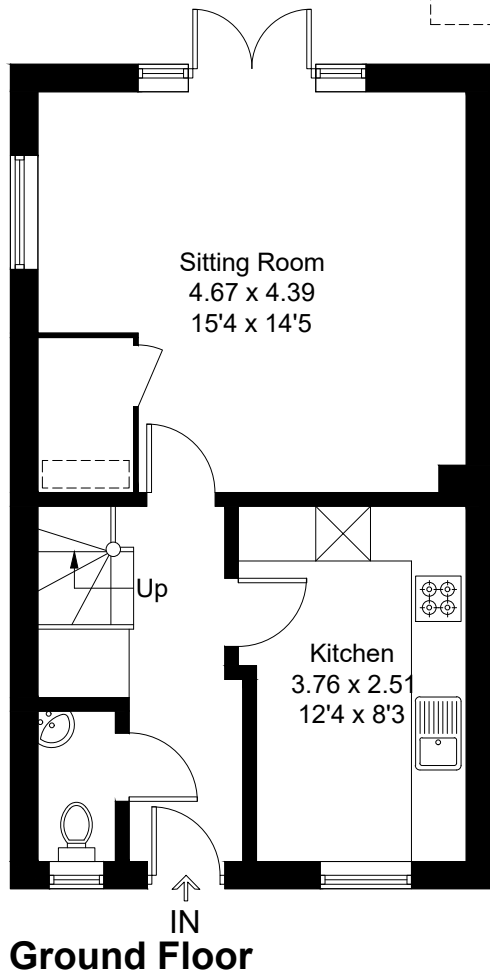


Approximate Gross Internal Area = 79.8 sq m / 859 sq ft
Garage = 10.9 sq m / 117 sq ft
Total = 90.7 sq m / 976 sq ft



= Reduced headroom below 1.5m / 5'0



Created by **BAY TREE ESTATES - Telephone 01243 850451.**

These plans are for representation purposes only as defined by RICS - Code of Measuring Practice. Not to scale.(ID771060)