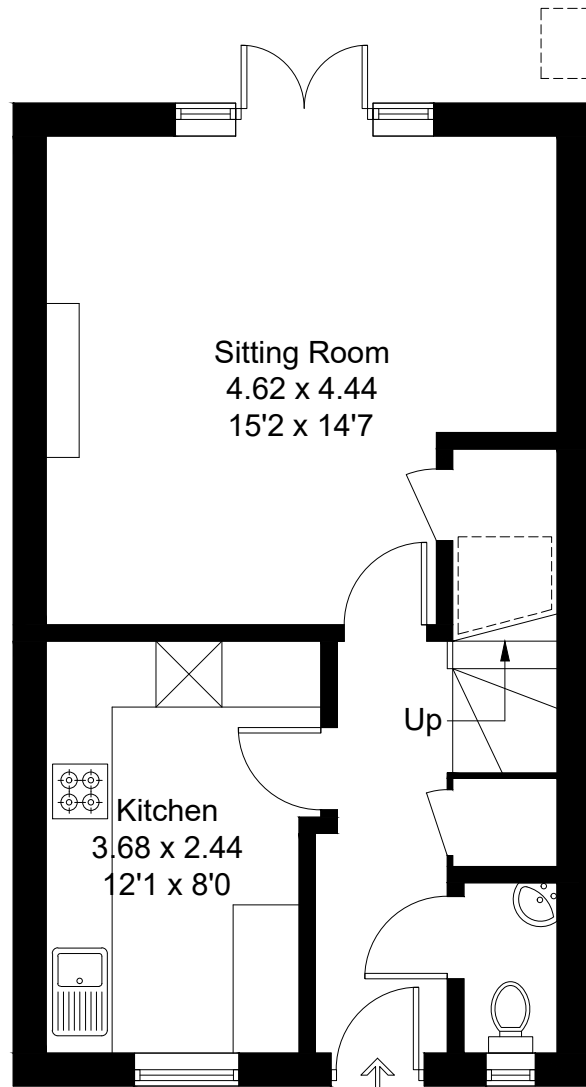


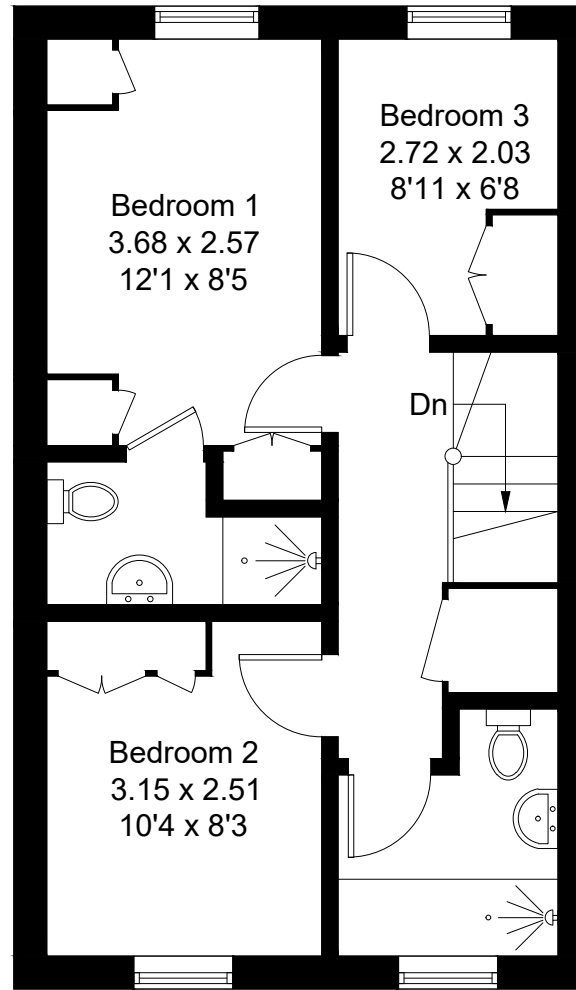
Approximate Gross Internal Area = 78 sq m / 840 sq ft
Garage = 14.8 sq m / 159 sq ft
Total = 92.8 sq m / 999 sq ft



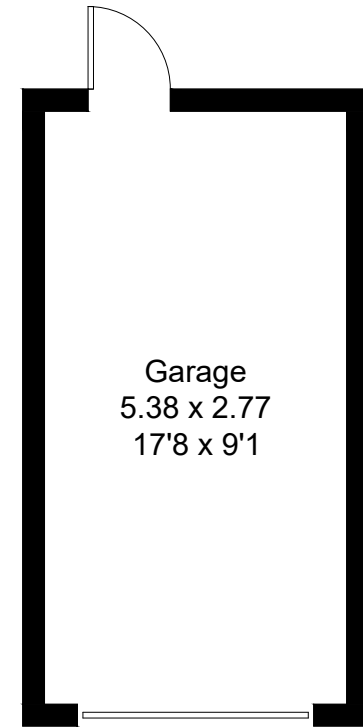
= Reduced headroom below 1.5m / 5'0



Ground Floor



First Floor



(Not Shown In Actual
Location / Orientation)

Created by **BAY TREE ESTATES - Telephone 01243 850451.**

These plans are for representation purposes only as defined by RICS - Code of Measuring Practice. Not to scale.(ID716061)