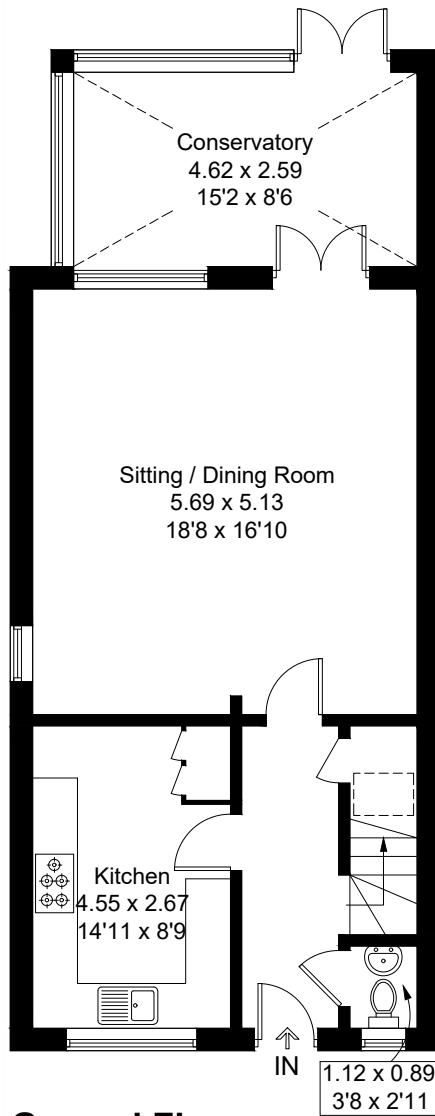
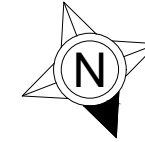

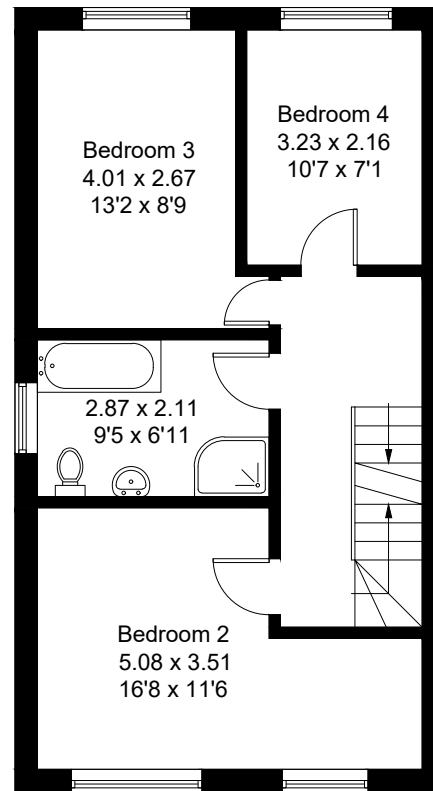


Approximate Gross Internal Area = 150.9 sq m / 1624 sq ft

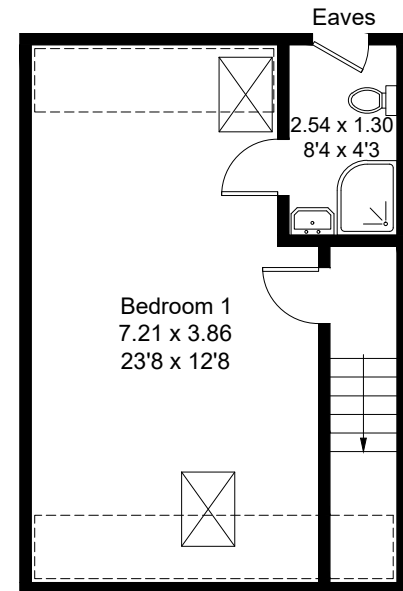


Ground Floor

 = Reduced headroom below 1.5m / 5'0



First Floor



Second Floor

Created by **BAY TREE ESTATES - Telephone 01243 850451.**

These plans are for representation purposes only as defined by RICS - Code of Measuring Practice. Not to scale.(ID642413)