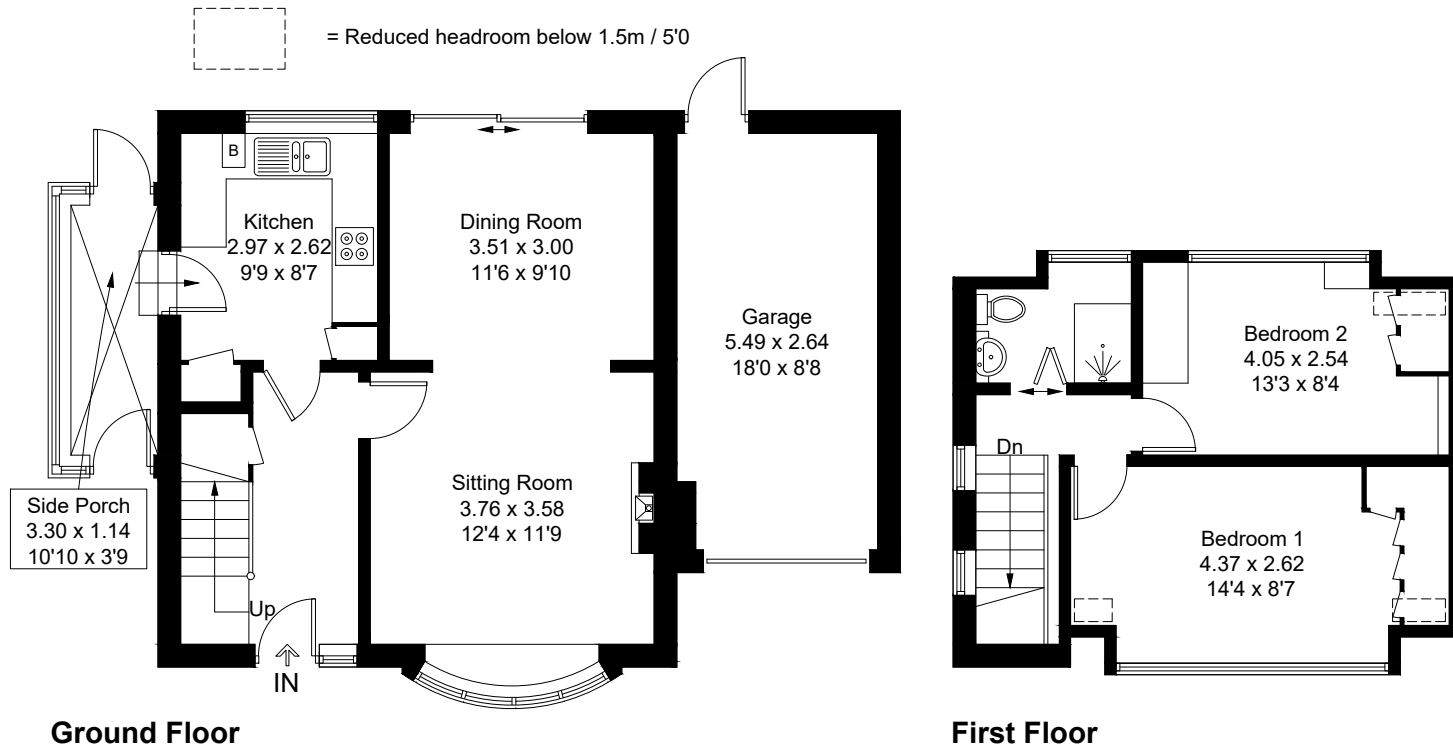
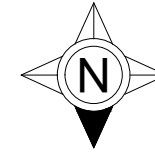


Approximate Gross Internal Area = 79.1 sq m / 851 sq ft
Garage = 14.7 sq m / 158 sq ft
Total = 93.8 sq m / 1009 sq ft



Created by **BAY TREE ESTATES - Telephone 01243 850451.**

These plans are for representation purposes only as defined by RICS - Code of Measuring Practice. Not to scale.(ID1313870)