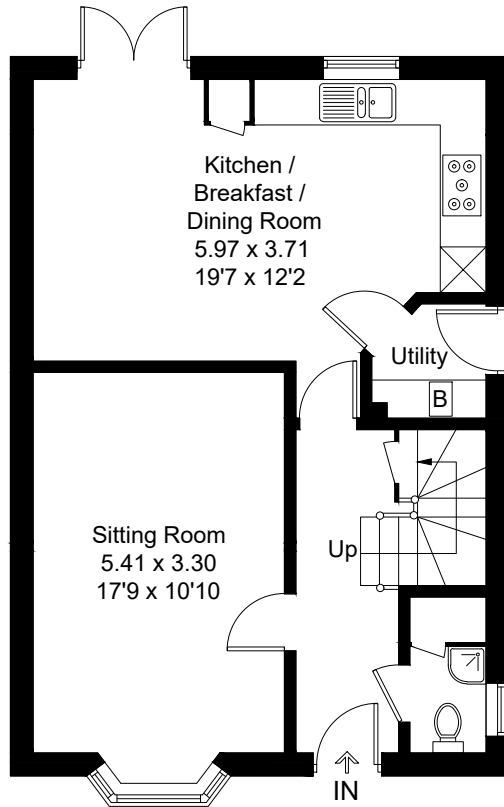
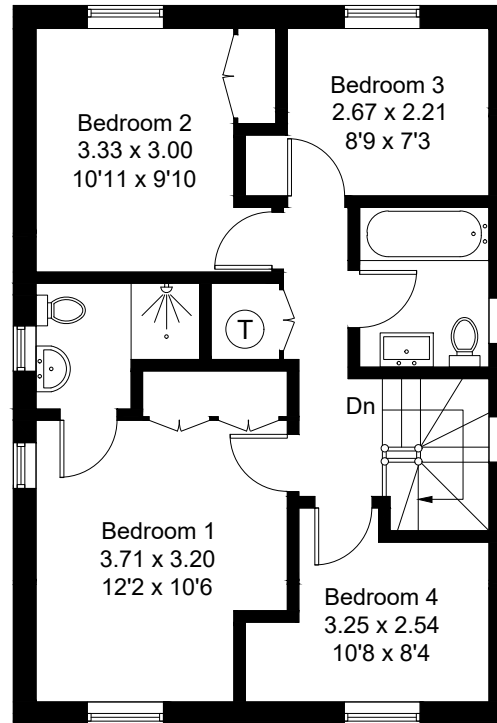


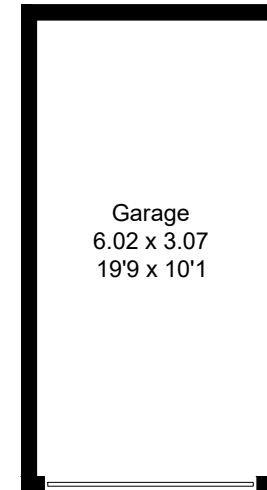
Approximate Gross Internal Area = 106.3 sq m / 1144 sq ft
Garage = 18.3 sq m / 197 sq ft
Total = 124.6 sq m / 1341 sq ft



Ground Floor



First Floor



(Not Shown In Actual
Location / Orientation)

Created by **BAY TREE ESTATES - Telephone 01243 850451.**

These plans are for representation purposes only as defined by RICS - Code of Measuring Practice. Not to scale.(ID1310920)