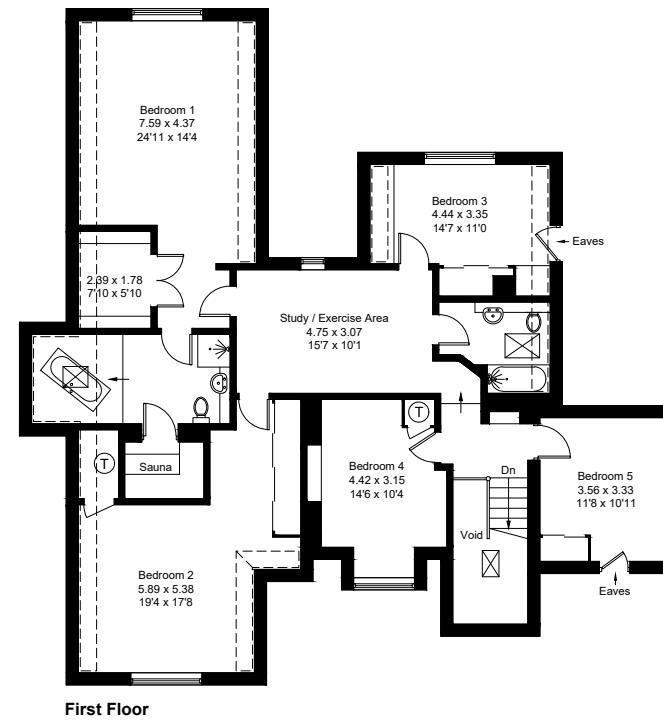
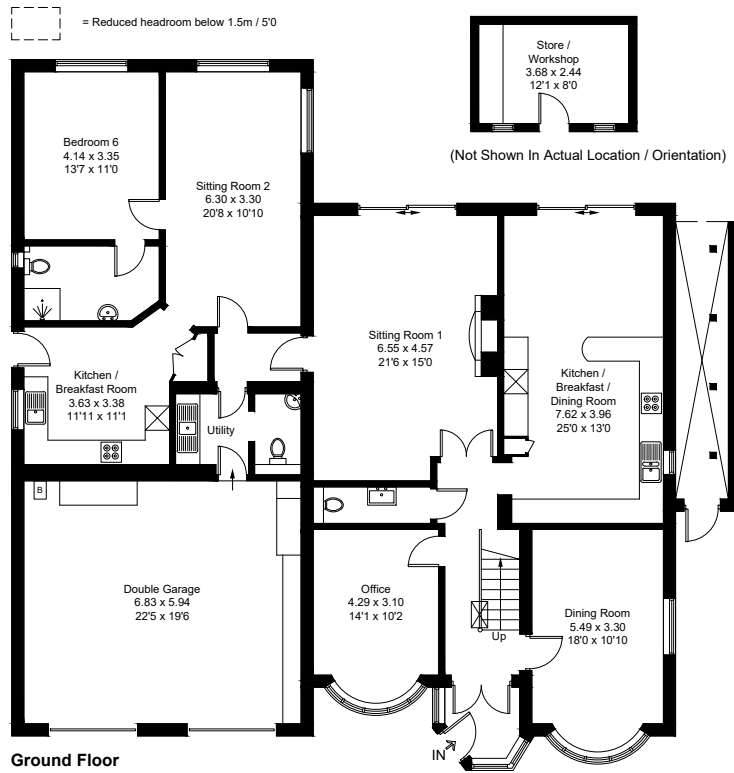
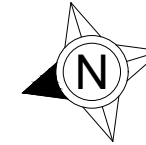


Approximate Gross Internal Area = 367.8 sq m / 3959 sq ft
 Store / Workshop = 9.1 sq m / 98 sq ft
 Total = 376.9 sq m / 4057 sq ft
 (Excluding Void)



Created by **BAY TREE ESTATES - Telephone 01243 850451.**

These plans are for representation purposes only as defined by RICS - Code of Measuring Practice. Not to scale.(ID1299806)