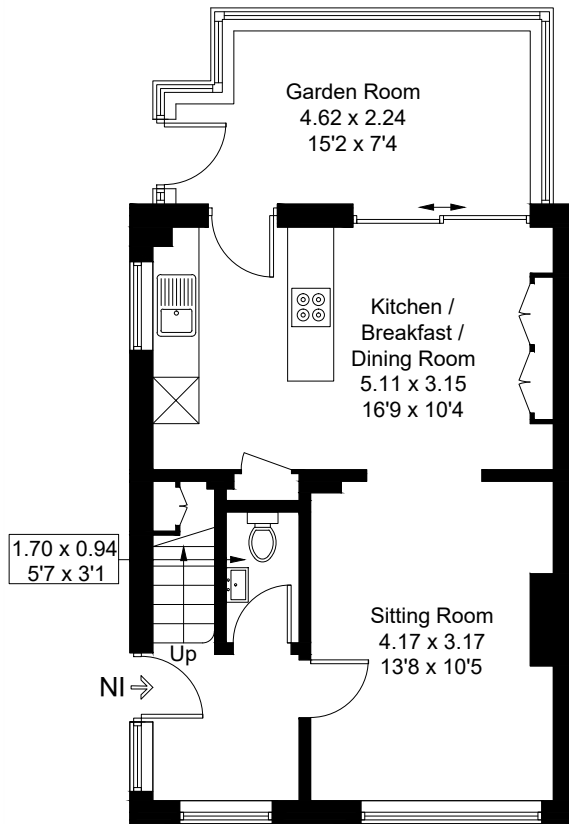
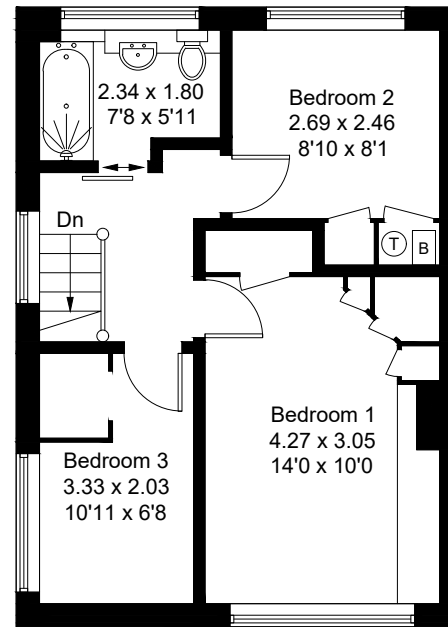


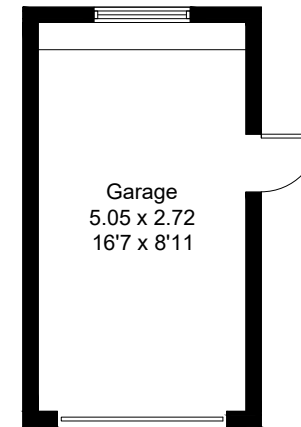
Approximate Gross Internal Area = 88.8 sq m / 956 sq ft
Garage = 13.6 sq m / 146 sq ft
Total = 102.4 sq m / 1102 sq ft



Ground Floor



First Floor



(Not Shown In Actual Location / Orientation)

Created by **BAY TREE ESTATES - Telephone 01243 850451.**

These plans are for representation purposes only as defined by RICS - Code of Measuring Practice. Not to scale.(ID1295183)