
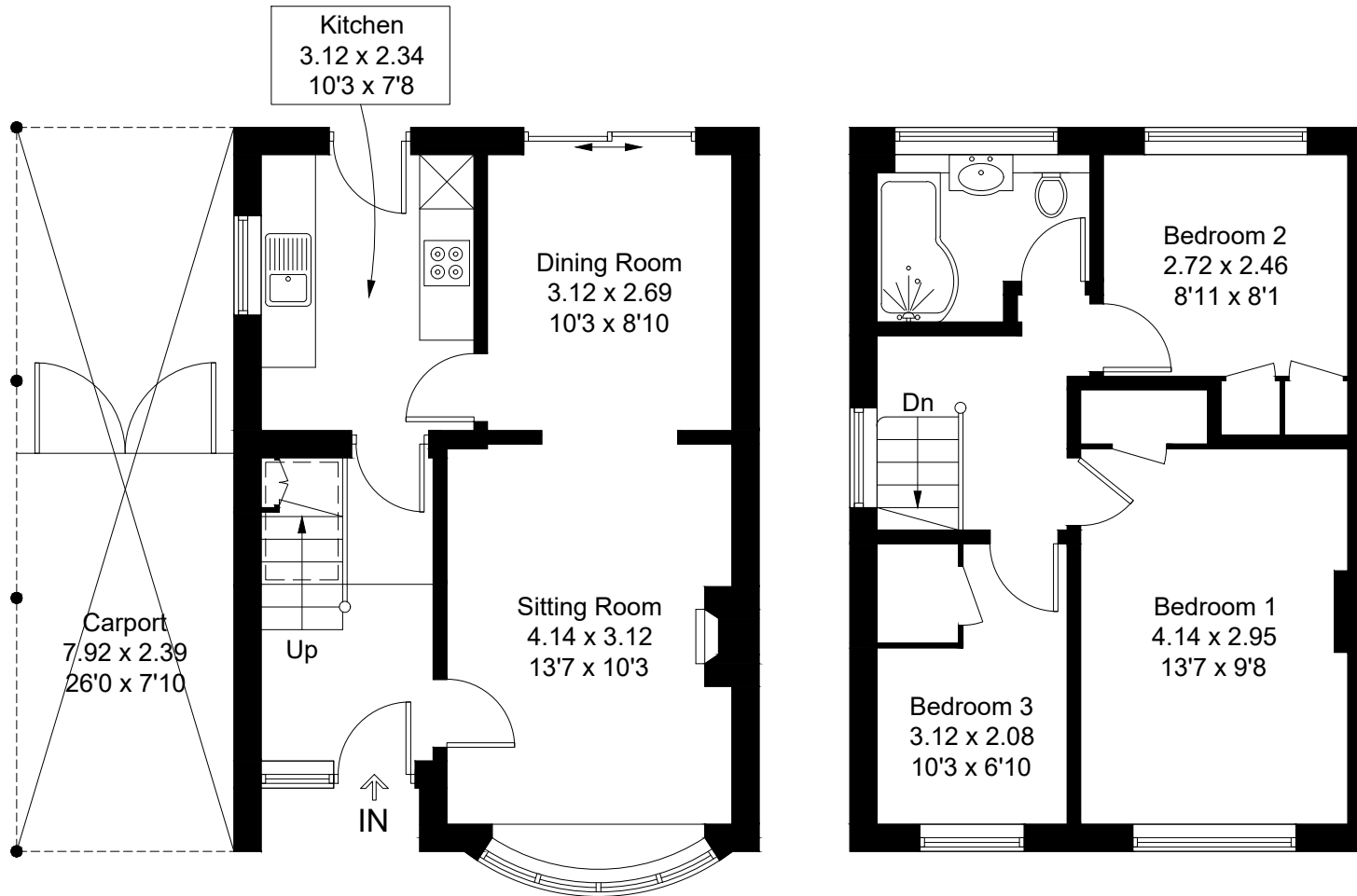


Approximate Gross Internal Area = 76.1 sq m / 819 sq ft
(Excluding Carport)

 = Reduced headroom below 1.5m / 5'0



Ground Floor

First Floor

Created by **BAY TREE ESTATES - Telephone 01243 850451.**

These plans are for representation purposes only as defined by RICS - Code of Measuring Practice. Not to scale.(ID1266689)