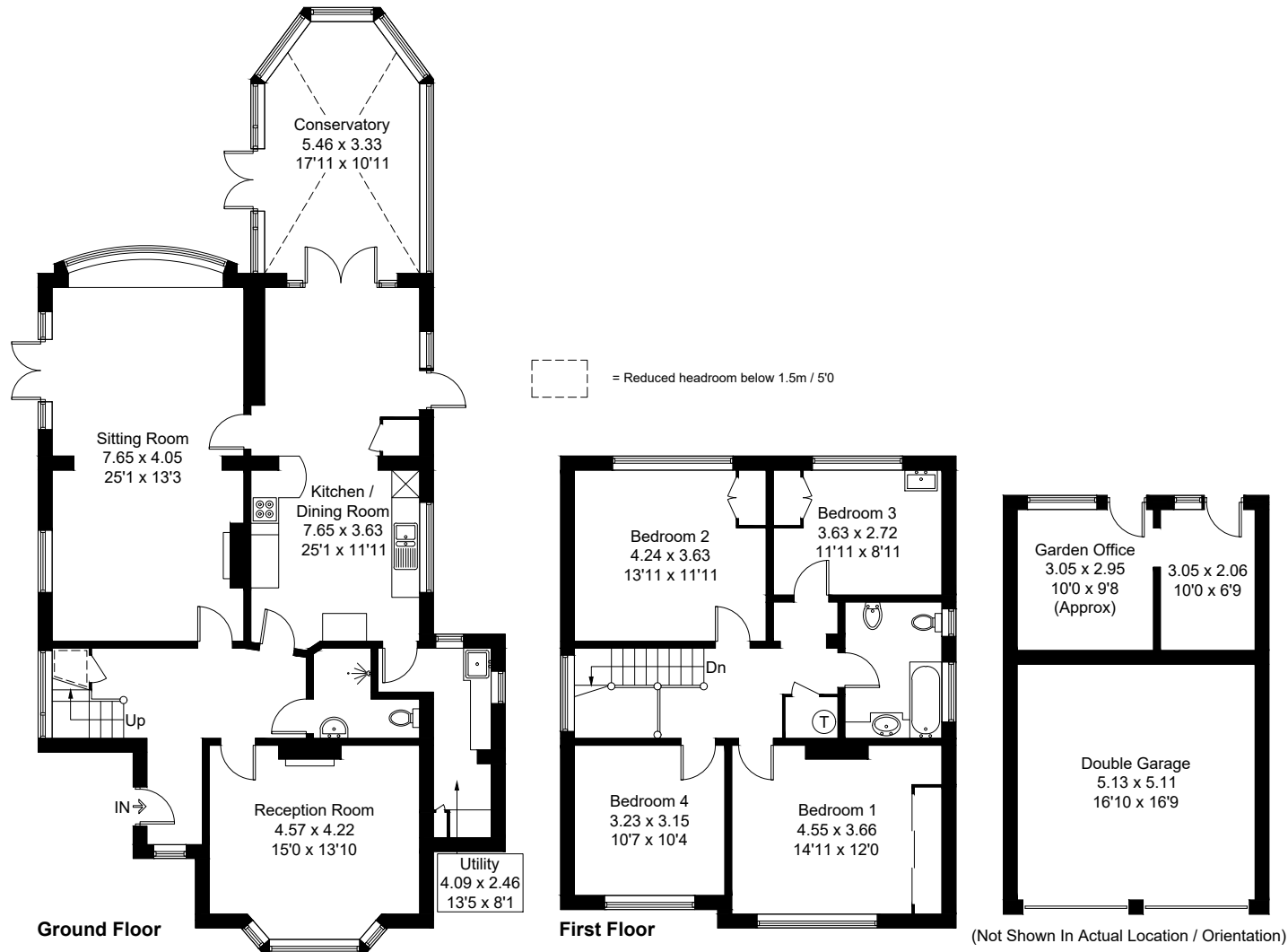
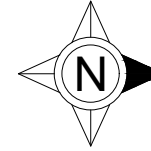


Approximate Gross Internal Area = 199.1 sq m / 2143 sq ft
Outbuilding = 43.8 sq m / 471 sq ft (Including Double Garage)
Total = 242.9 sq m / 2614 sq ft



Created by **BAY TREE ESTATES** - Telephone **01243 850451**.

These plans are for representation purposes only as defined by RICS - Code of Measuring Practice. Not to scale.(ID1257205)