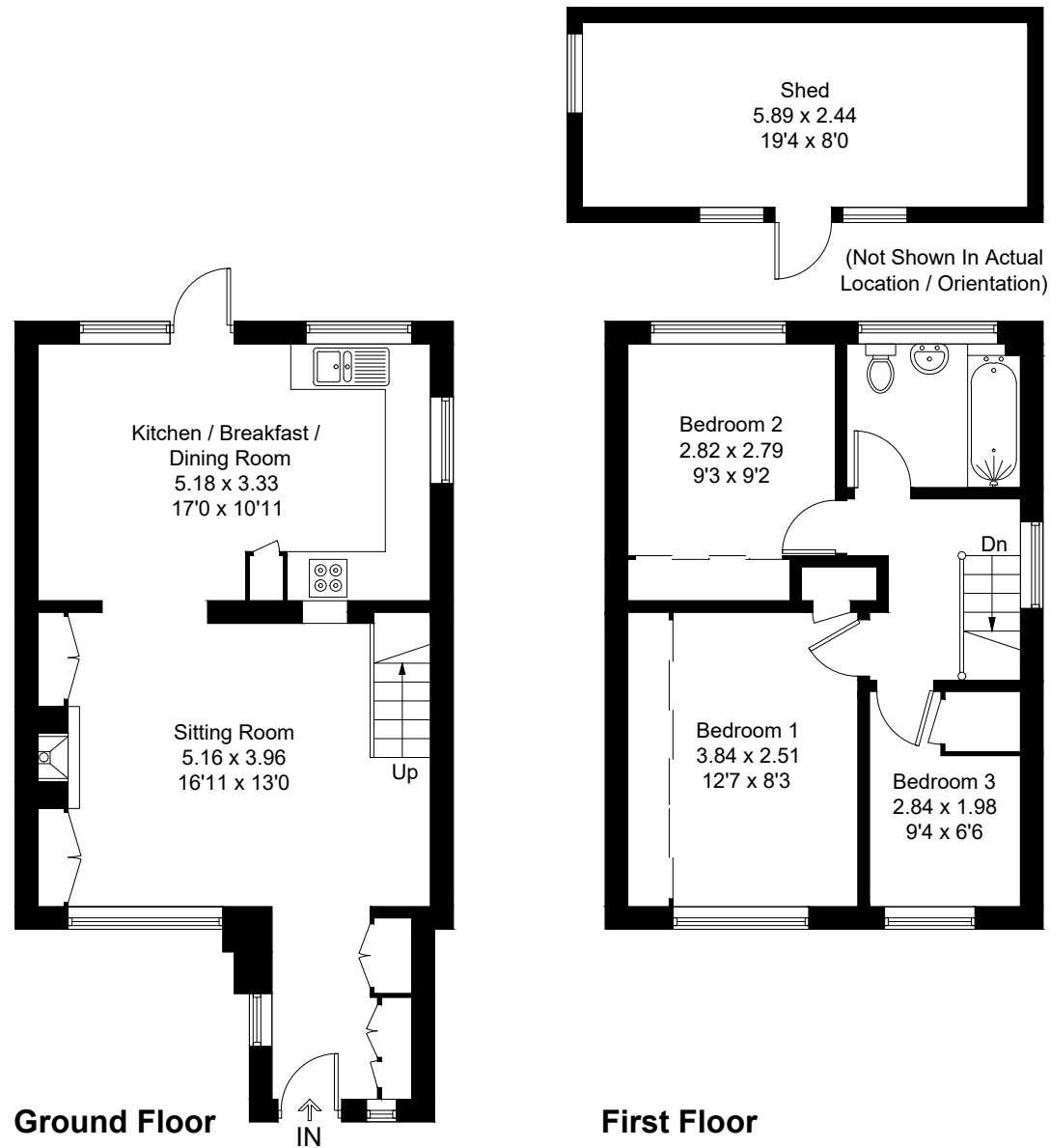


Approximate Gross Internal Area = 82.4 sq m / 887 sq ft
Shed = 14.4 sq m / 155 sq ft
Total = 96.8 sq m / 1042 sq ft



Created by **BAY TREE ESTATES - Telephone 01243 850451.**

These plans are for representation purposes only as defined by RICS - Code of Measuring Practice. Not to scale.(ID1241985)