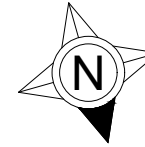

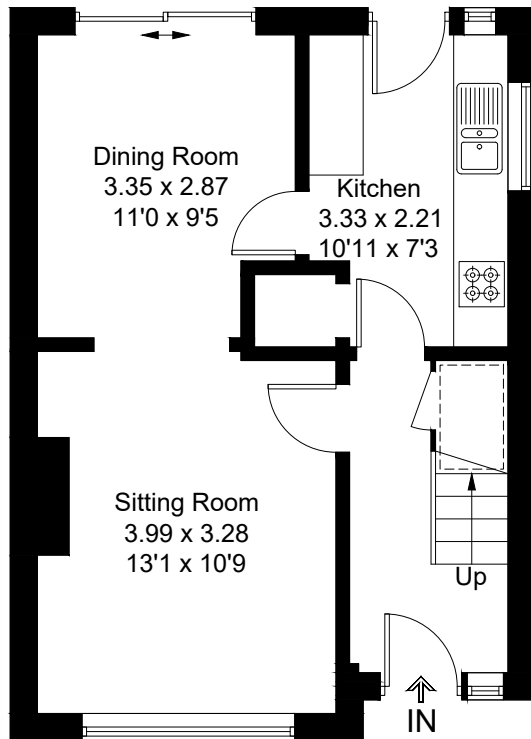


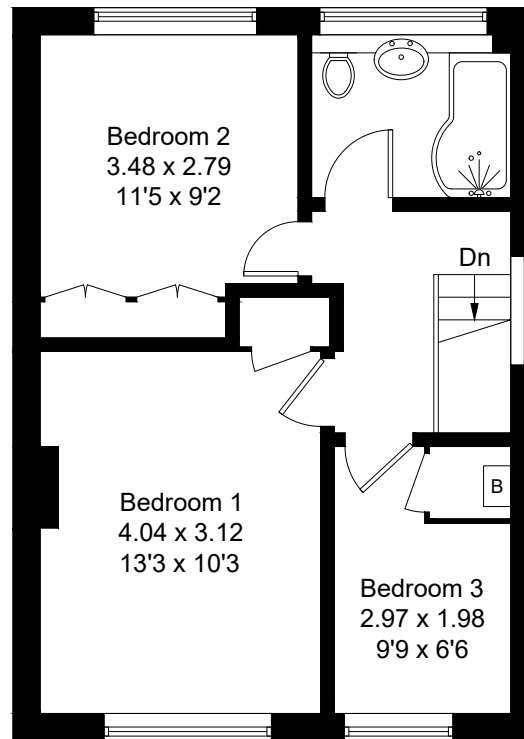
Approximate Gross Internal Area = 77.7 sq m / 836 sq ft
Garden Store = 7.1 sq m / 76 sq ft
Total = 84.8 sq m / 912 sq ft



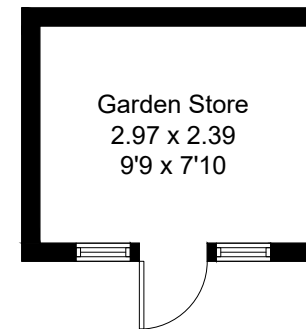
 = Reduced headroom below 1.5m / 5'0



Ground Floor



First Floor



(Not Shown In Actual
Location / Orientation)

Created by **BAY TREE ESTATES - Telephone 01243 850451.**

These plans are for representation purposes only as defined by RICS - Code of Measuring Practice. Not to scale.(ID1176983)