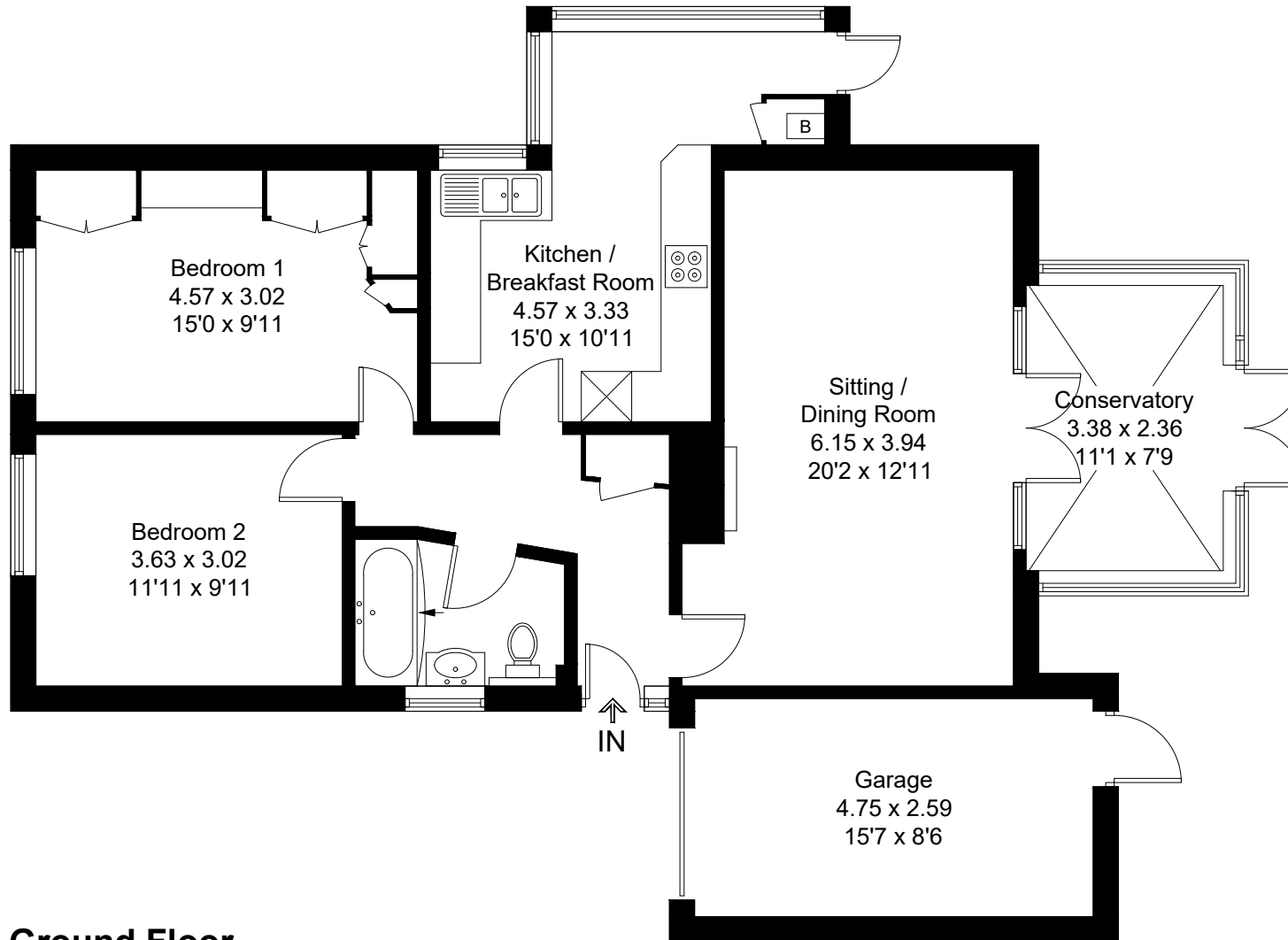
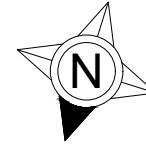


Approximate Gross Internal Area = 86.0 sq m / 926 sq ft  
Garage = 12.5 sq m / 134 sq ft  
Total = 98.5 sq m / 1060 sq ft



## Ground Floor

Created by **BAY TREE ESTATES - Telephone 01243 850451.**

These plans are for representation purposes only as defined by RICS - Code of Measuring Practice. Not to scale.(ID1143399)