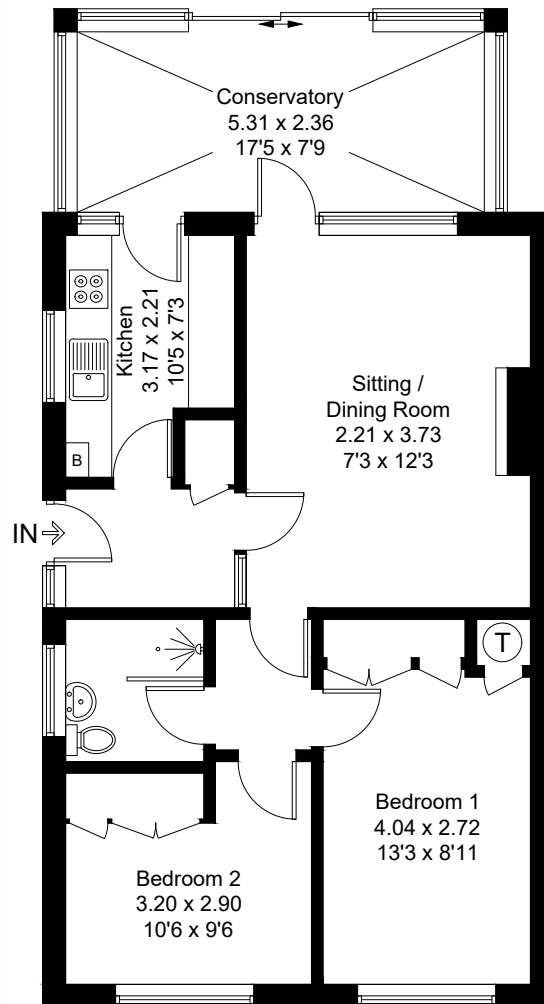
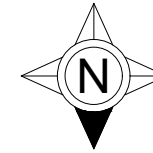

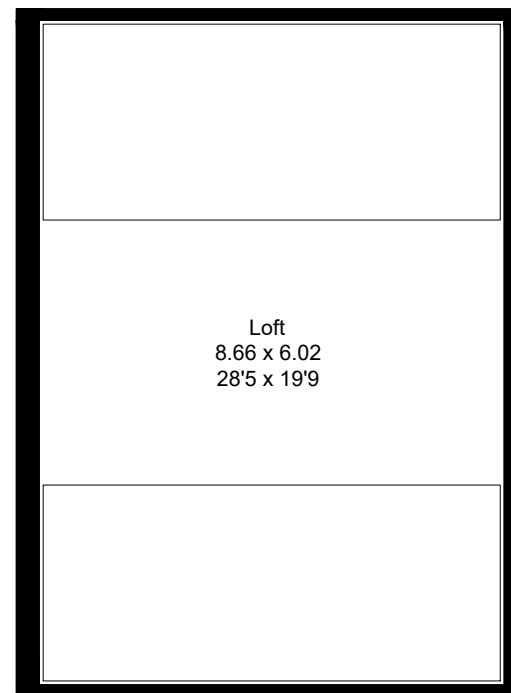


Approximate Gross Internal Area = 125.8 sq m / 1354 sq ft
Garage = 14.6 sq m / 157 sq ft
Total = 140.4 sq m / 1511 sq ft
(Including Loft)

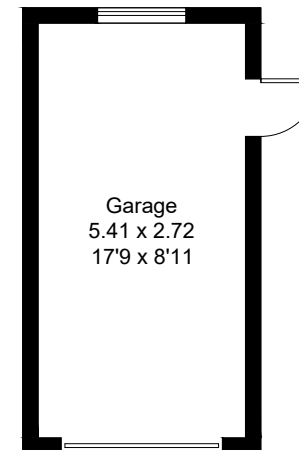


Ground Floor

 = Reduced headroom below 1.5m / 5'0



First Floor



(Not Shown In Actual
Location / Orientation)

Created by **BAY TREE ESTATES - Telephone 01243 850451.**

These plans are for representation purposes only as defined by RICS - Code of Measuring Practice. Not to scale.(ID1075215)