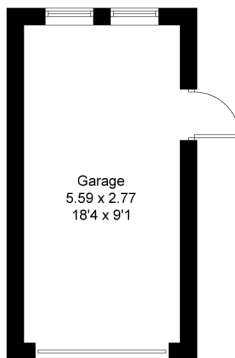
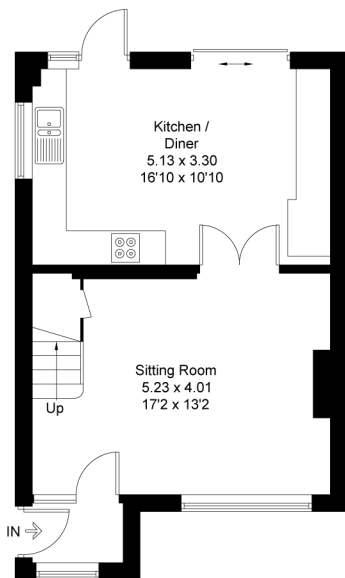


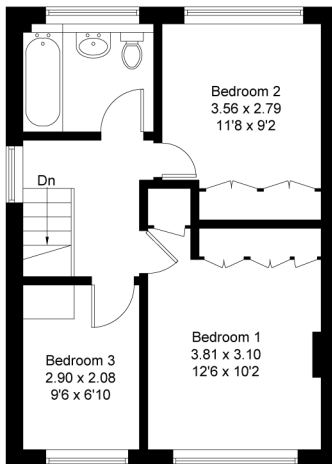
Approximate Gross Internal Area  
81.1 sq m / 873 sq ft  
Garage = 15.8 sq m / 170 sq ft  
Total = 96.9 sq m / 1043 sq ft



(Not Shown In Actual  
Location / Orientation)



**Ground Floor**



**First Floor**

Created by **BAY TREES ESTATES - Telephone 01243 850451.**

These plans are for representation purposes only as defined by RICS - Code of Measuring Practice. Not to scale. (ID272584)