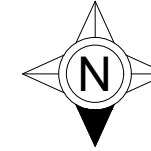
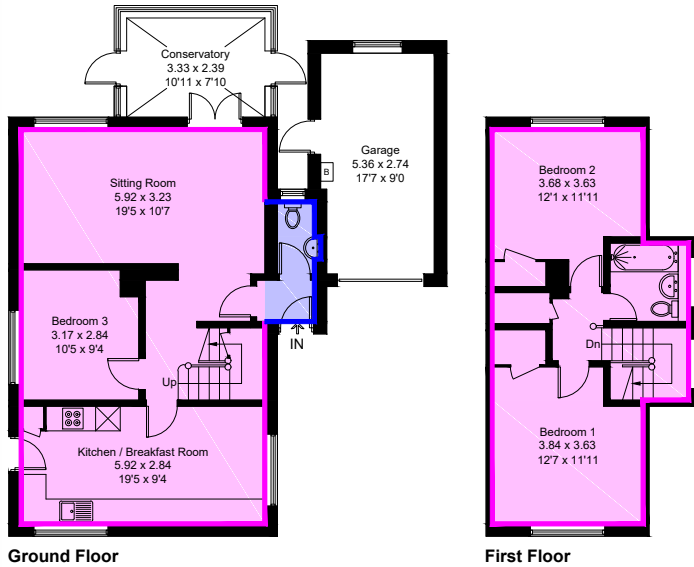


Approximate Gross Internal Area = 108.5 sq m / 1168 sq ft
 Garage = 14.5 sq m / 156 sq ft
 Total = 123.0 sq m / 1324 sq ft



- MAIN HOUSE - - - MAIN HOUSE - PARTY WALL
- EXT 1 - - - EXT 1 - PARTY WALL
- EXT 2 - - - EXT 2 - PARTY WALL
- EXT 3 - - - EXT 3 - PARTY WALL
- EXT 4 - - - EXT 4 - PARTY WALL
- ALTERNATIVE - SHELTERED WALL



AREA						
COMPONENT	FLOOR					
	-1	0	1	2	3	4
	m ²	m ²	m ²	m ²	m ²	m ²
MAIN HOUSE	0.0	56.34	39.03	0.0	0.0	0.0
EXTENSION 1	0.0	3.56	0.0	0.0	0.0	0.0
EXTENSION 2	0.0	0.0	0.0	0.0	0.0	0.0
EXTENSION 3	0.0	0.0	0.0	0.0	0.0	0.0
EXTENSION 4	0.0	0.0	0.0	0.0	0.0	0.0
ALTERNATIVE - SHELTERED WALL	0.0	0.0	0.0	0.0	0.0	0.0

HEAT LOSS PERIMETER						
COMPONENT	FLOOR					
	-1	0	1	2	3	4
	m	m	m	m	m	m
MAIN HOUSE	0.0	28.00	28.60	0.0	0.0	0.0
MAIN HOUSE PARTY WALL	0.0	0.0	0.0	0.0	0.0	0.0
EXTENSION 1	0.0	5.59	0.0	0.0	0.0	0.0
EXTENSION 1 PARTY WALL	0.0	0.0	0.0	0.0	0.0	0.0
EXTENSION 2	0.0	0.0	0.0	0.0	0.0	0.0
EXTENSION 2 PARTY WALL	0.0	0.0	0.0	0.0	0.0	0.0
EXTENSION 3	0.0	0.0	0.0	0.0	0.0	0.0
EXTENSION 3 PARTY WALL	0.0	0.0	0.0	0.0	0.0	0.0
EXTENSION 4	0.0	0.0	0.0	0.0	0.0	0.0
EXTENSION 4 PARTY WALL	0.0	0.0	0.0	0.0	0.0	0.0
ALTERNATIVE - SHELTERED WALL	0.0	0.0	0.0	0.0	0.0	0.0

Created by **BAY TREE ESTATES - Telephone 01243 850451.**

These plans are for representation purposes only as defined by RICS - Code of Measuring Practice. Not to scale.(ID1012895)