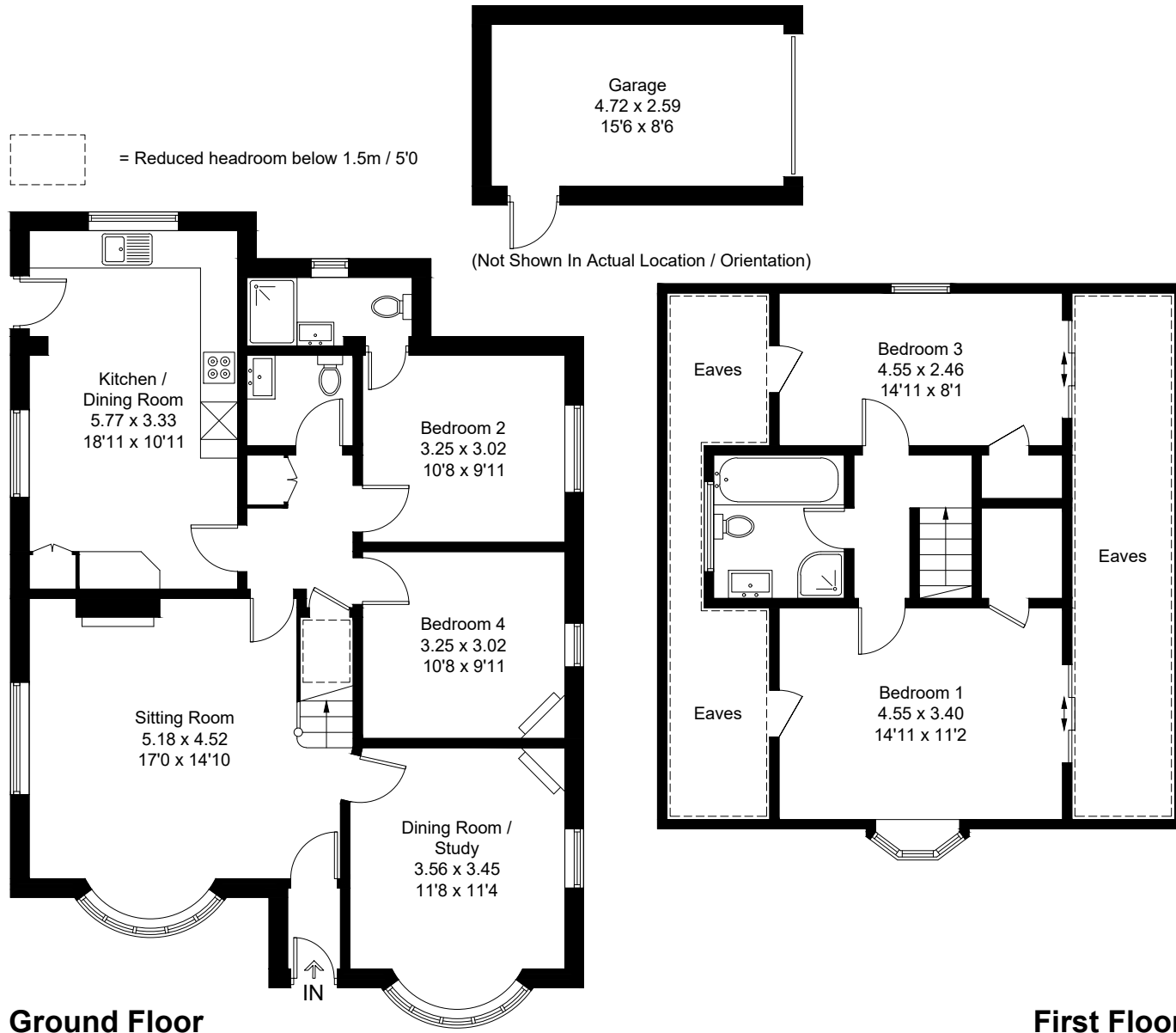
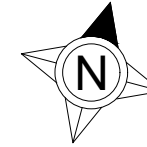


Approximate Gross Internal Area = 159.9 sq m / 1721 sq ft
(Including Eaves)
Garage = 12.3 sq m / 132 sq ft
Total = 172.2 sq m / 1853 sq ft



Created by **BAY TREE ESTATES - Telephone 01243 850451.**

These plans are for representation purposes only as defined by RICS - Code of Measuring Practice. Not to scale.(ID807434)