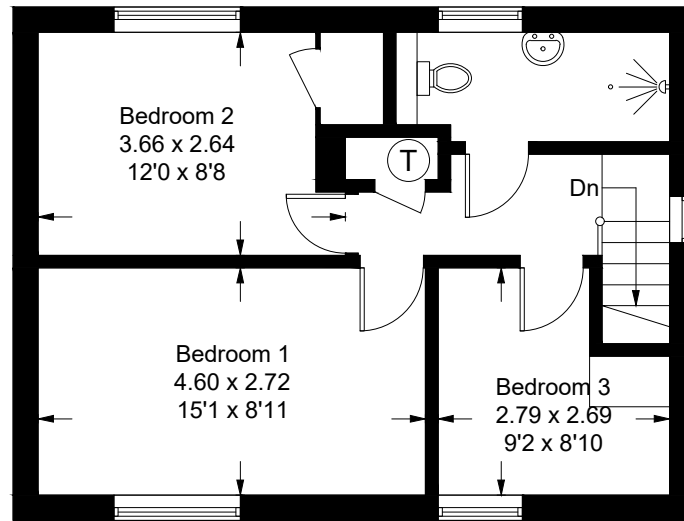
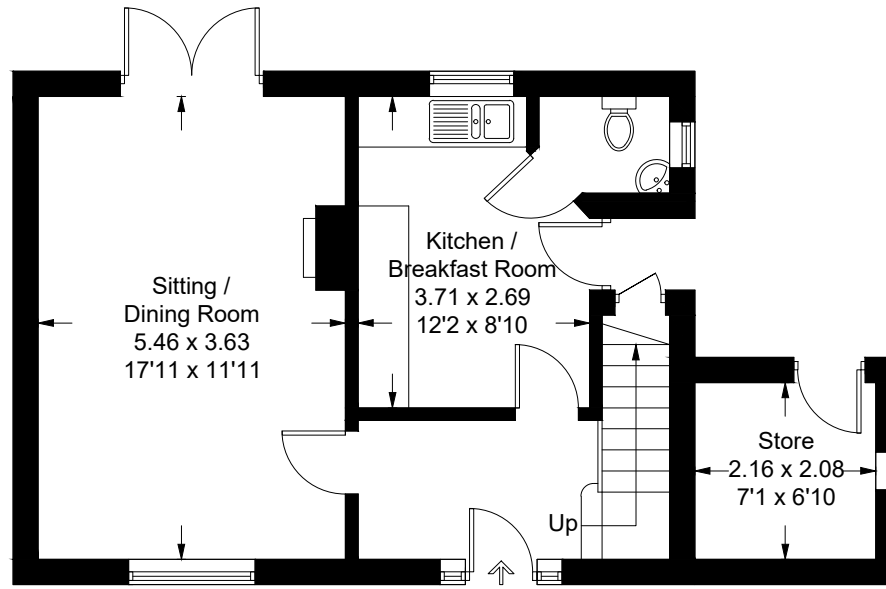


Approximate Gross Internal Area = 81.7 sq m / 879 sq ft
Store = 4.6 sq m / 49 sq ft
Total = 86.3 sq m / 928 sq ft



First Floor



Ground Floor

Created by **BAY TREE ESTATES - Telephone 01243 850451.**

These plans are for representation purposes only as defined by RICS - Code of Measuring Practice. Not to scale.(ID1068721)