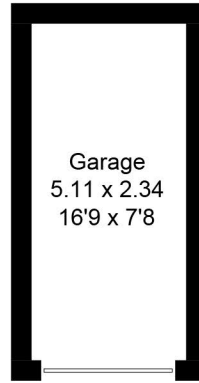


Approximate Gross Internal Area = 78.2 sq m / 842 sq ft

Garage = 12 sq m / 129 sq ft

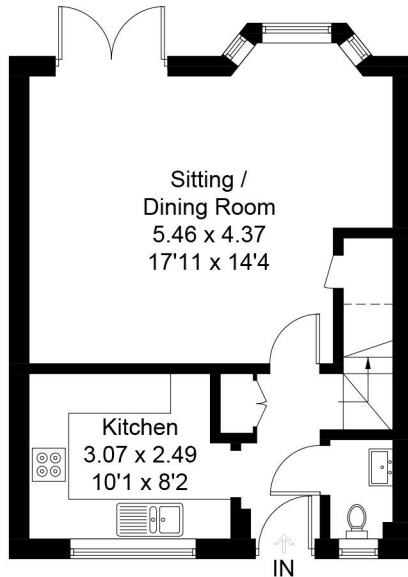
Total = 90.2 sq m / 971 sq ft



Garage
5.11 x 2.34
16'9 x 7'8

Garage

(Not Shown In Actual
Location / Orientation)

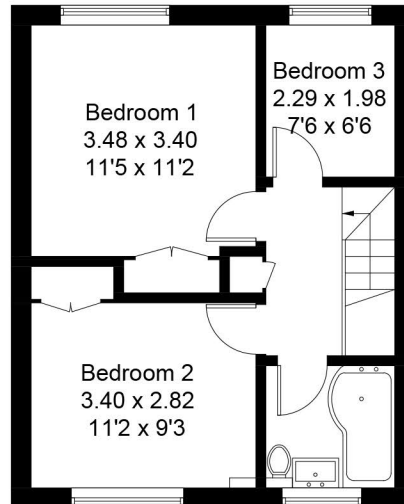


Sitting /
Dining Room
5.46 x 4.37
17'11 x 14'4

Kitchen
3.07 x 2.49
10'1 x 8'2

IN

Ground Floor



Bedroom 1
3.48 x 3.40
11'5 x 11'2

Bedroom 3
2.29 x 1.98
7'6 x 6'6

Bedroom 2
3.40 x 2.82
11'2 x 9'3

First Floor



= Reduced headroom below 1.5m / 5'0

Created by **BAY TREE ESTATES - Telephone 01243 850451.**

These plans are for representation purposes only as defined by RICS - Code of Measuring Practice. Not to scale.(ID376271)