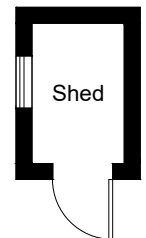
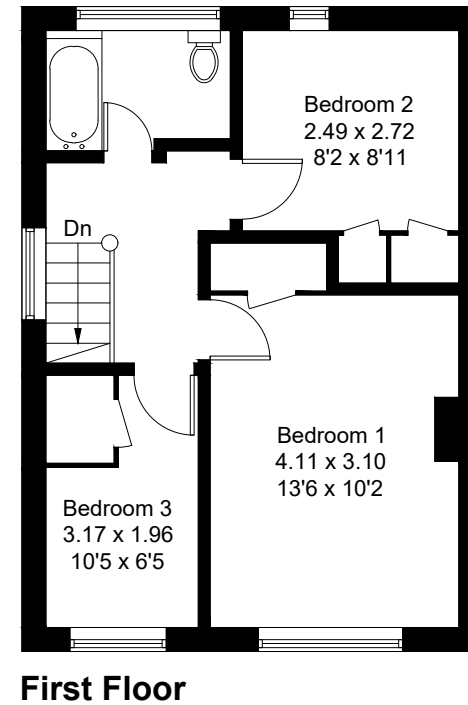
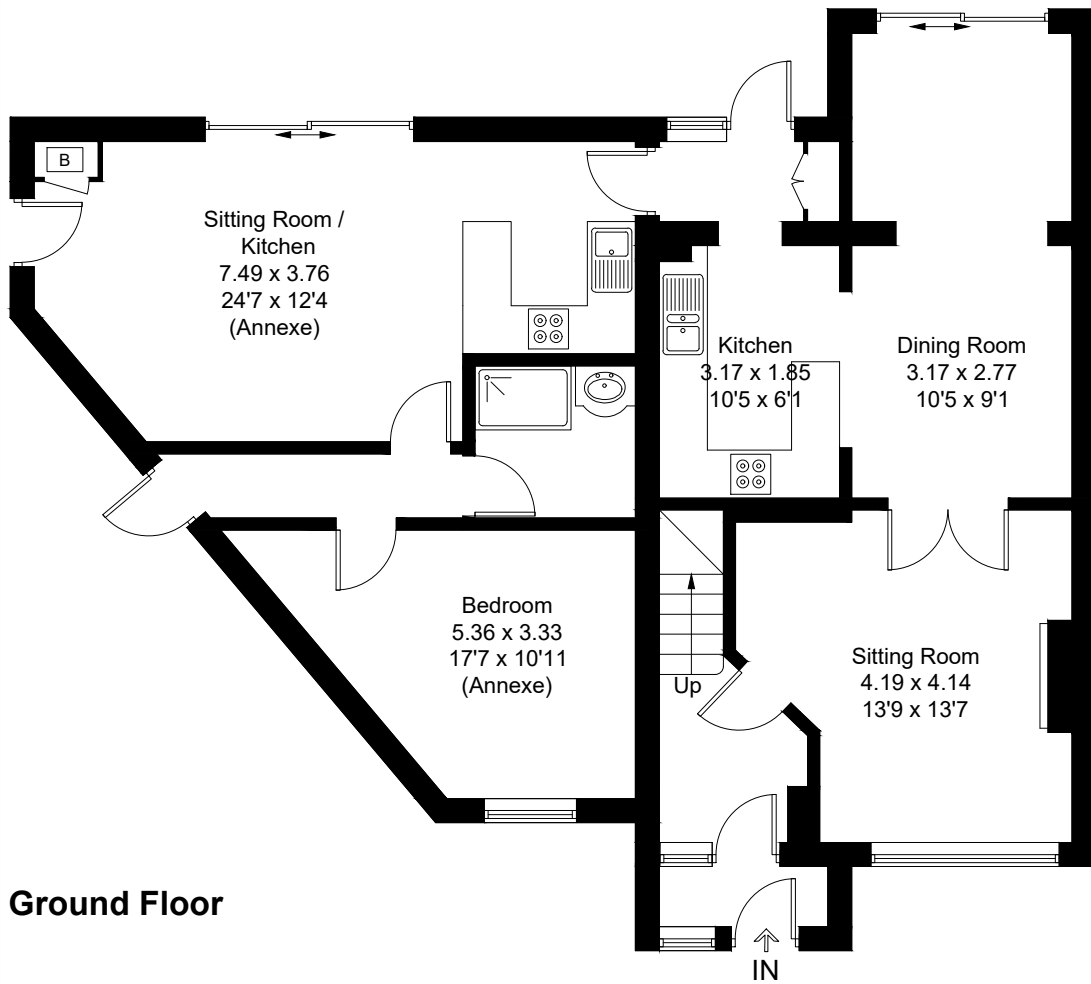


Approximate Gross Internal Area = 138.8 sq m / 1494 sq ft
Shed = 2.0 sq m / 21 sq ft
Total = 140.8 sq m / 1515 sq ft



(Not Shown In Actual Location / Orientation)

Created by **BAY TREE ESTATES - Telephone 01243 850451.**

These plans are for representation purposes only as defined by RICS - Code of Measuring Practice. Not to scale.(ID1030865)