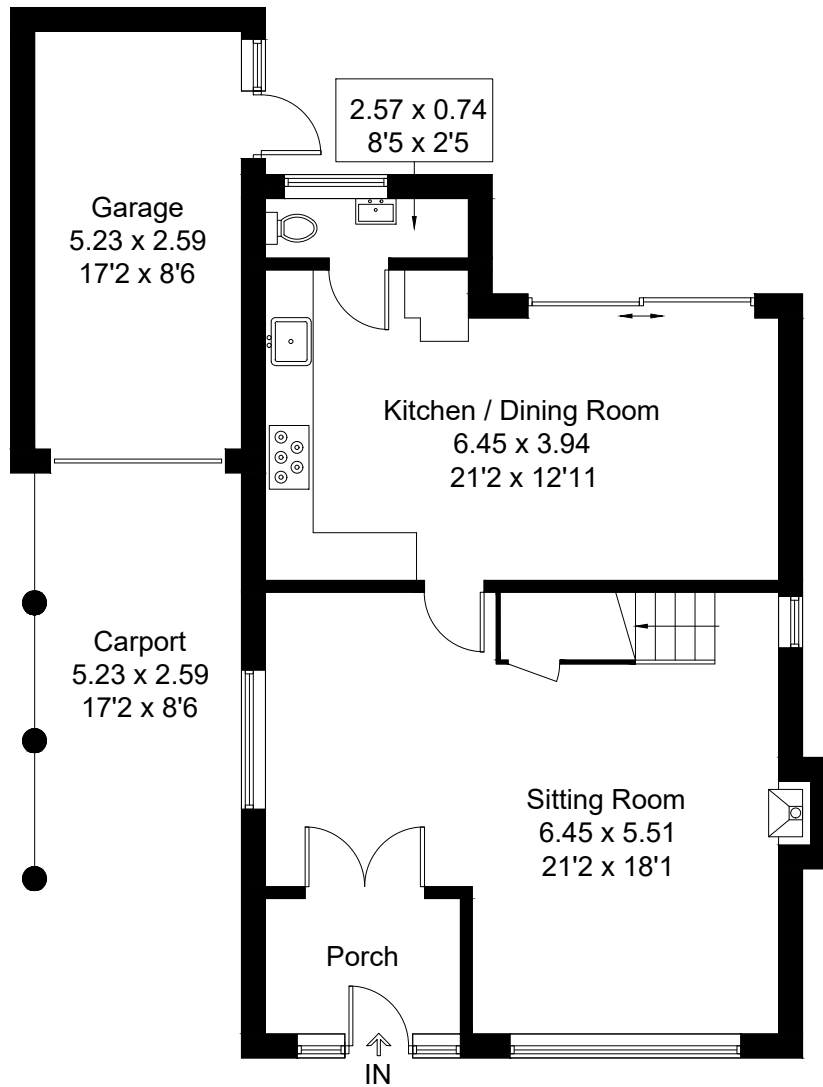
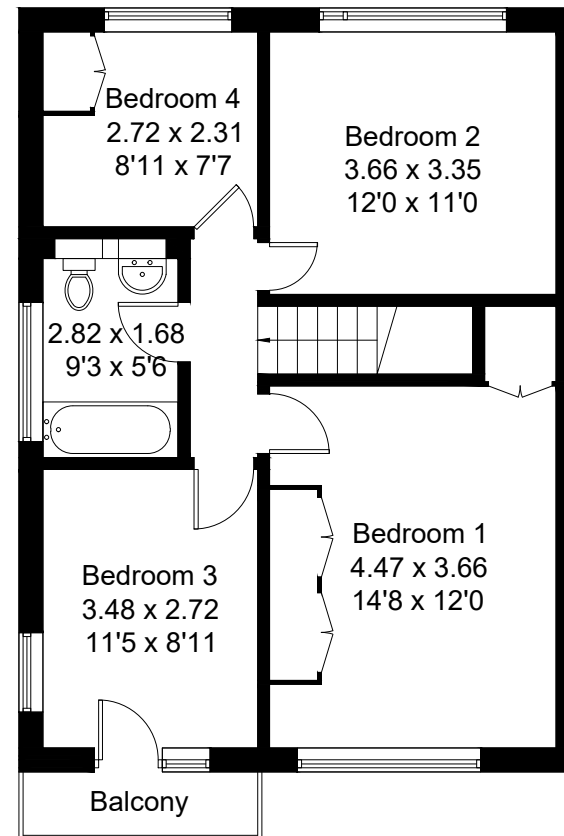


Approximate Gross Internal Area = 120.9 sq m / 1301 sq ft  
Garage = 13.8 sq m / 148 sq ft  
Total = 134.7 sq m / 1449 sq ft



**Ground Floor**



**First Floor**

Created by **BAY TREE ESTATES - Telephone 01243 850451.**

These plans are for representation purposes only as defined by RICS - Code of Measuring Practice. Not to scale.(ID475657)