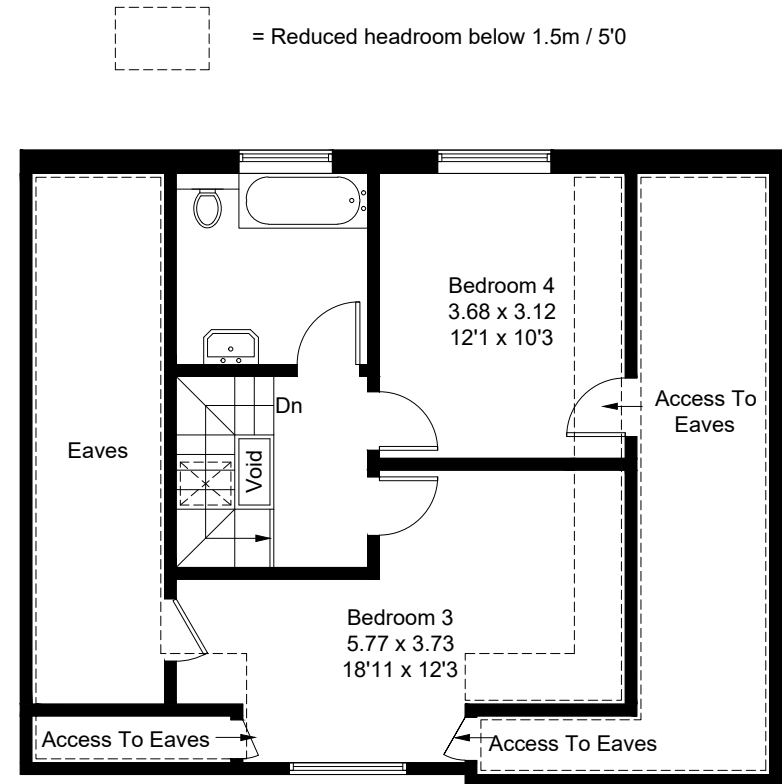
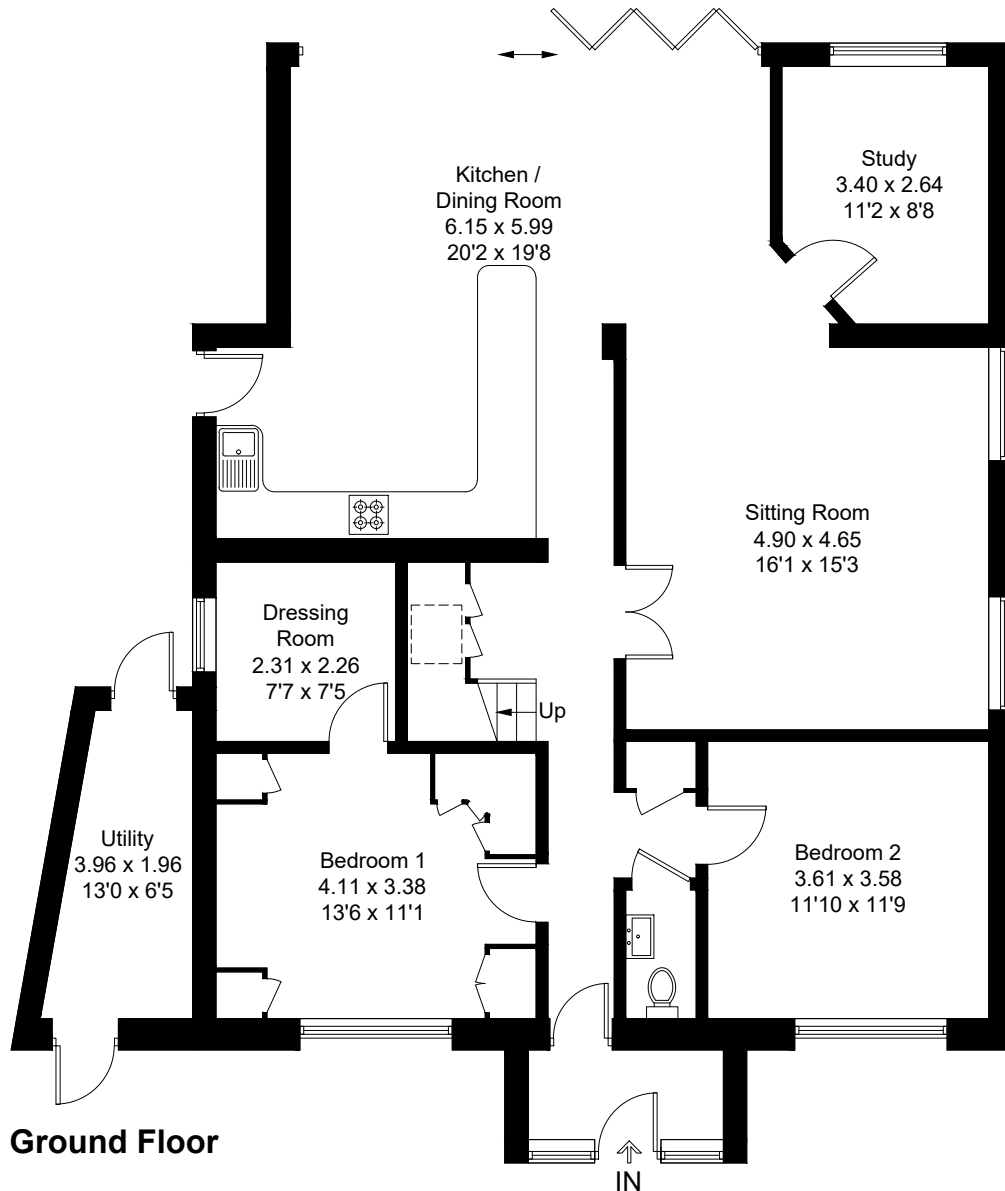


Approximate Gross Internal Area = 194.3 sq m / 2091 sq ft
 Utility = 6.7 sq m / 72 sq ft
 Total = 201.0 sq m / 2163 sq ft
 (Including Eaves / Void)



Created by **BAY TREE ESTATES - Telephone 01243 850451.**

These plans are for representation purposes only as defined by RICS - Code of Measuring Practice. Not to scale.(ID774953)